

1. Complete the following ray diagrams to show where the image of the object will form, and what its relative size will be.
2. Describe the nature of the image in each of the situations. Is it real or virtual? What is the magnification?

a.

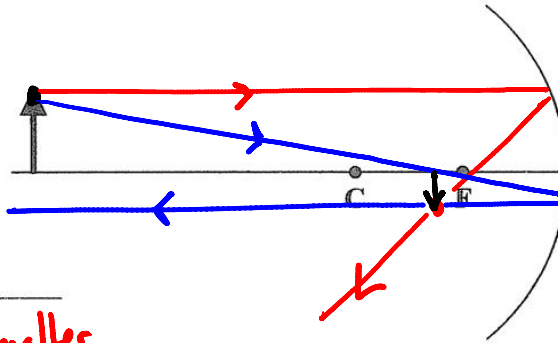


Image: Real

Magnification: *smaller upside down*

b.

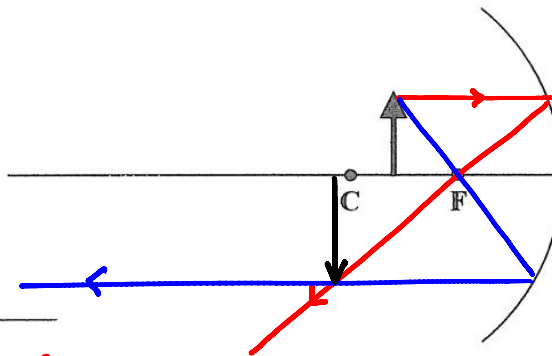


Image: Real

Magnification: *larger upside down*

c.

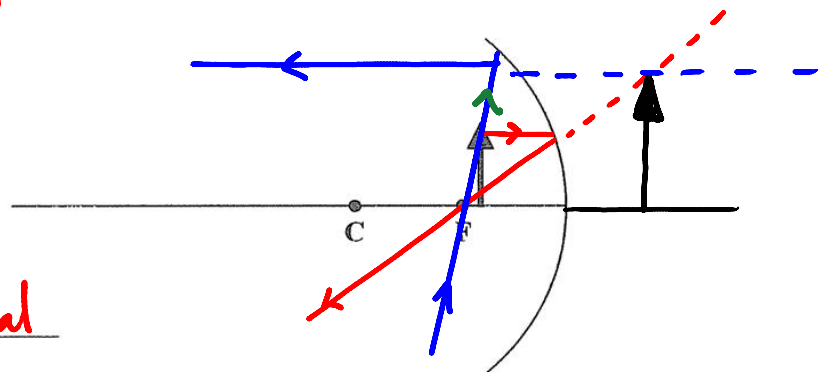


Image: Virtual

Magnification: *larger right-side up.*

3. Complete the following ray diagrams to show where the image of the object will form, and what its relative size will be.
4. Describe the nature of the image in each of the situations. Is it real or virtual? What is the magnification?

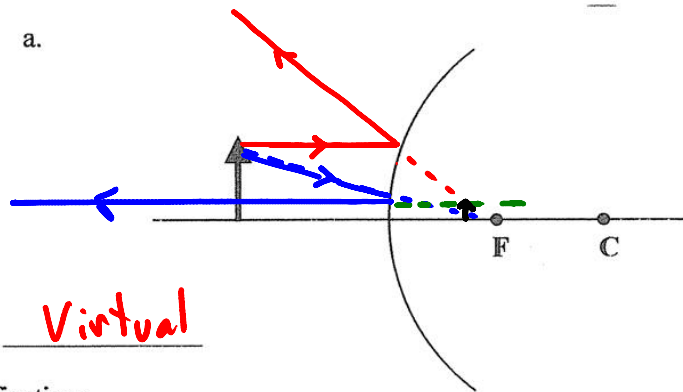


Image: Virtual

Magnification:

right-side up
smaller